

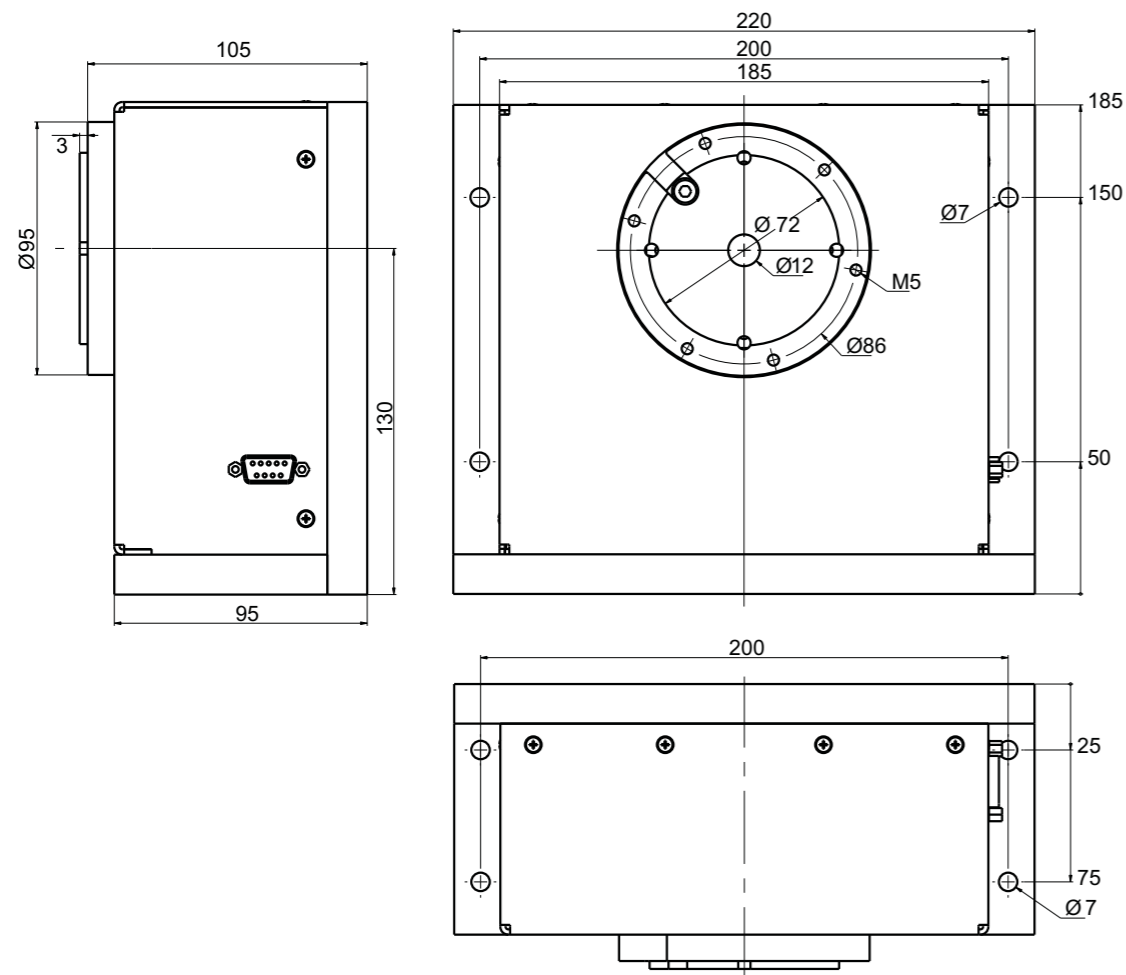
Scale drawing



isel[®]
From Components to Systems

Turning Unit *iZD 54*

... for various applications



Layout: iselmedia

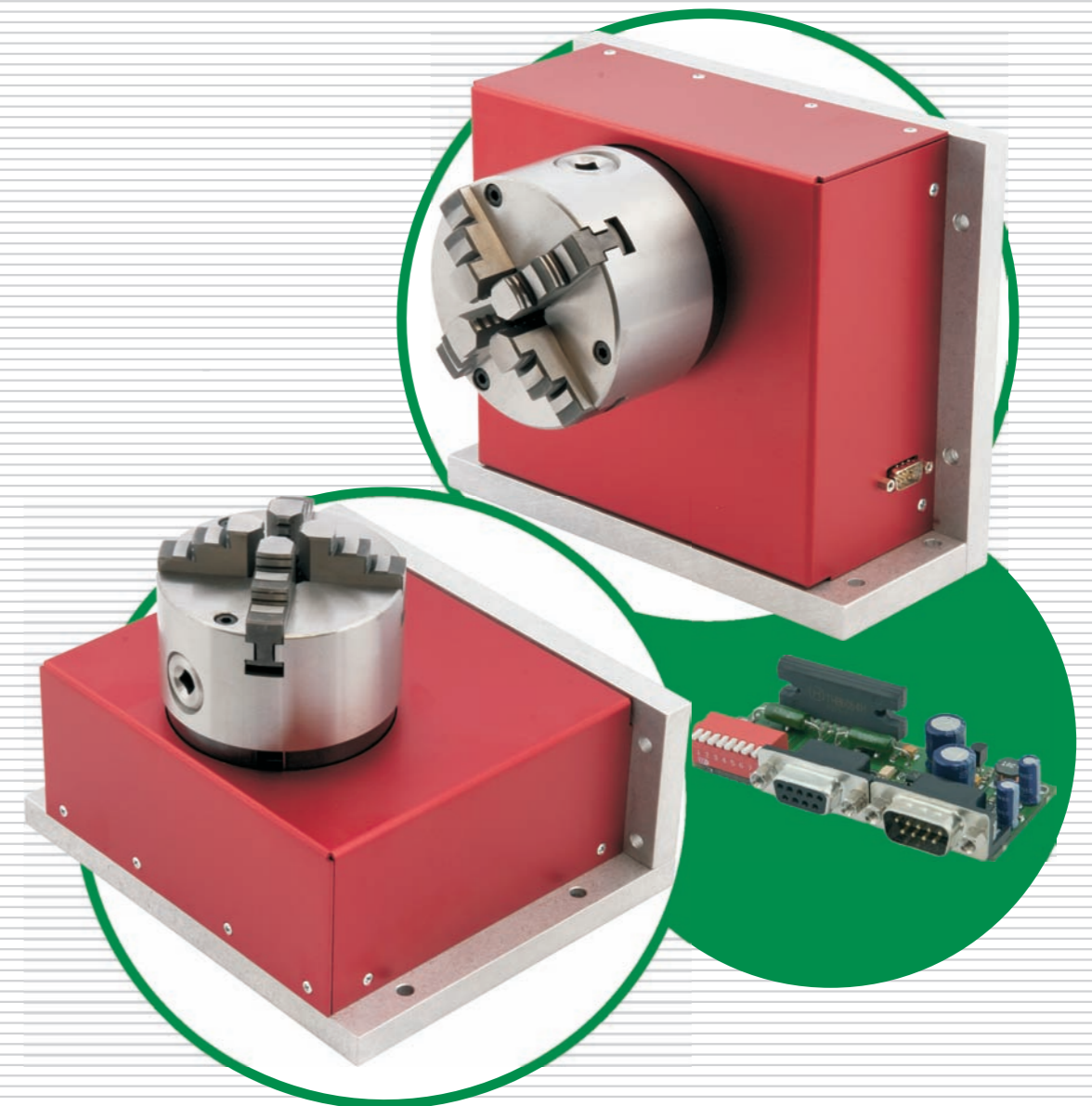
Technical specifications subject to change!

made by **isel**[®]

isel[®]
From Components to Systems

isel Germany AG

Untere Roede 2 // D-36466 Dermbach
phone: +49 (0) 36 964 / 84 500 // Mail: verkauf@isel.com // www.isel.com



isel[®] www.isel.com

Characteristics

- low-backlash belt drive with stepper motor
- horizontally and vertically
- speed reduction 1:54
- various accessories
- good price-/performance ratio
- high torque
- integrated final stage for indexer (Option)
- Dimensions (WxHxD): 220 x 185 x 95 mm
- weight: 6,5 kg

Technical Data turning unit iZD 54

Reduction gear ratio		1:54
Output speed	[1/min]	0-22
Working torque	[Nm]	40
Nominal holding torque (static load)	[Nm]	48
Minimal step sizes	[arcmin]	2

* Adoption max. 8 Khz, half step operation

Technical Data integrated final stage

Phase current [A]	2,8
Supply	27 - 50 VDC
Interface	step-/direction module
Signal voltage [V]	5
maximum increments	1:64
maximum input frequency [Khz]	100
Motor current monitoring	✓

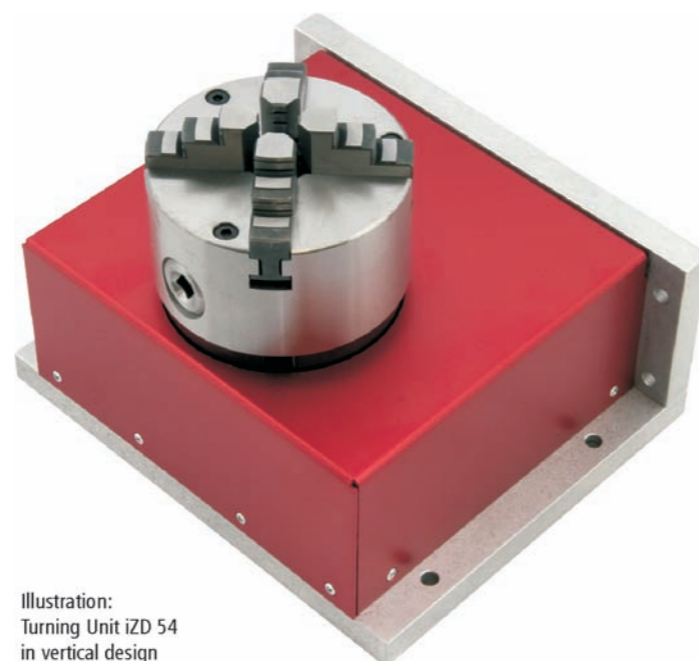
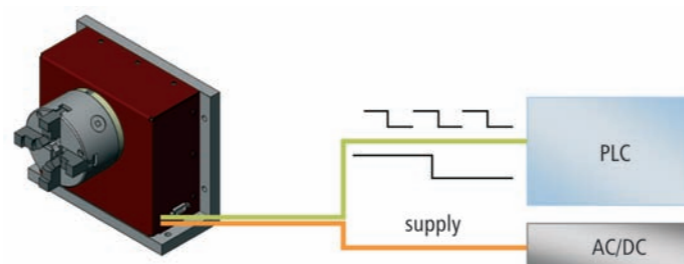


Illustration:
Turning Unit iZD 54
in vertical design
with 4-jaw chuck



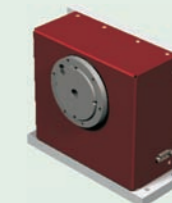
Illustration:
Turning Unit iZD 54
in horizontal design
with 4-jaw chuck



Principle of control with integrated amplifier

At the ZD54A a built-in amplifier as option allows the flexible use of the turntable with any indexer at TTL level. These are, for example a PLC, or even just a simple square wave generator. By using this standard interface, a large number of control are adaptable.

Order Data



Basis-Turning Unit iZD 54
Item-No.: 260400 0000

Accessories



Aluminium T-slot disk
Ø 250mm, PT24
Item-No.: 269052 0250



3-jaw-chuck
Ø 100mm
Item-No.: 269060 0100



4-jaw-chuck
Ø 100mm
Item-No.: 269061 0100



integrated final stage
48V / 4,5A
Item-No.: 390248